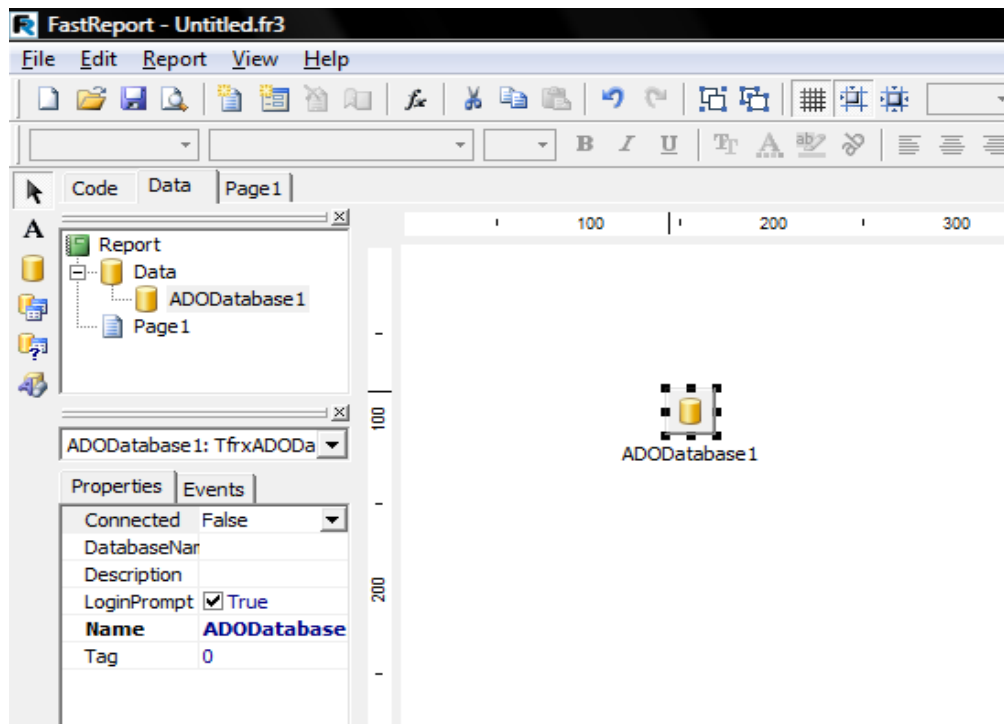


HOWTO use MySQL DB in FastReport Studio/Server

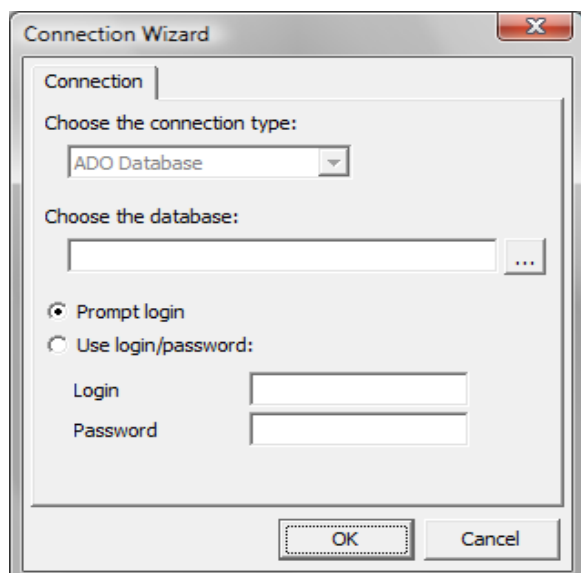
step by step example

First you should download and install the MySQL Connector/ODBC from page <http://dev.mysql.com/downloads/connector/odbc/3.51.html>

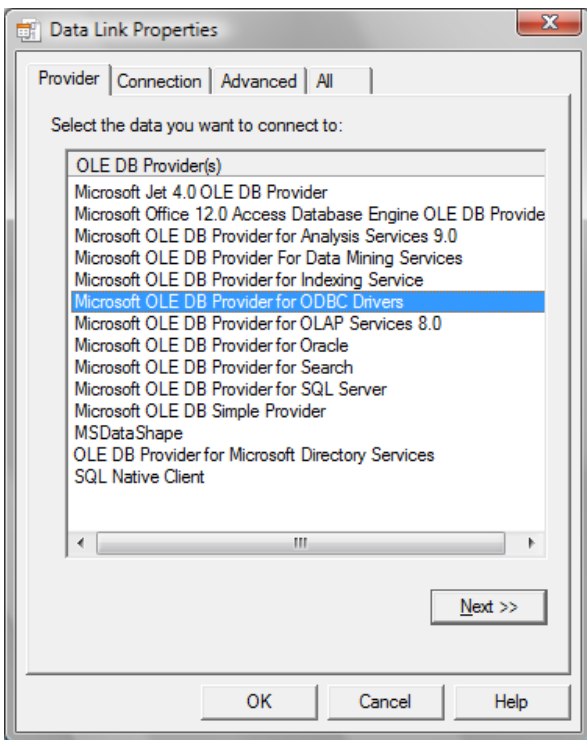
1. Then open FastReport Studio designer, Data page and place the ADO database component on blank page.



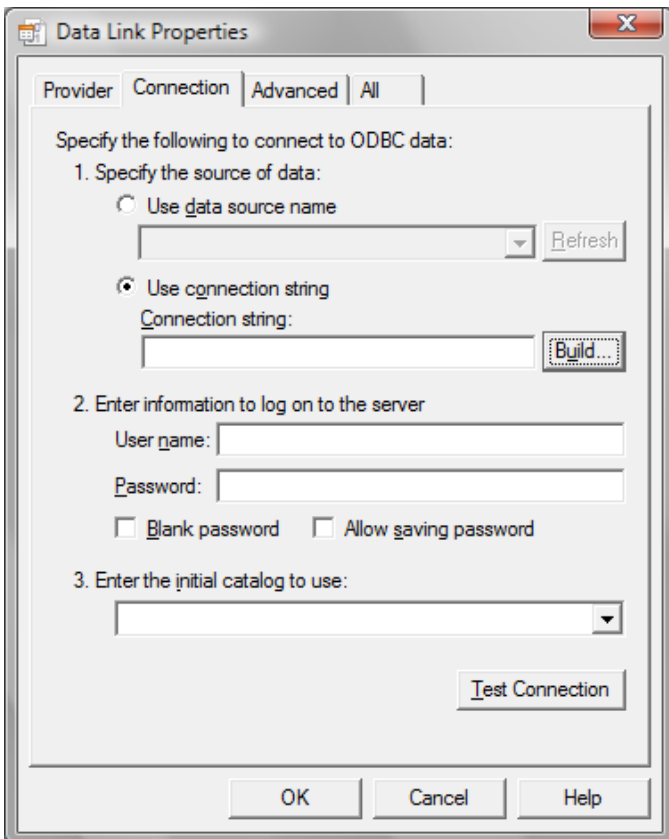
2. Double click on ADODatabase1 and press button "..." in right of "Choose the database" line.



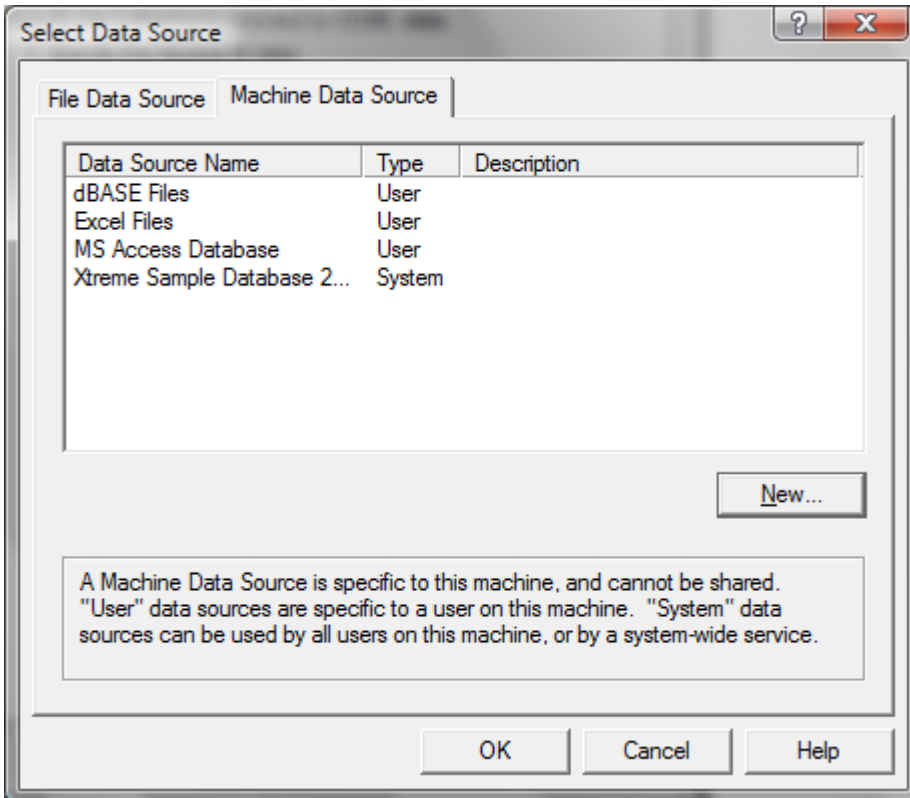
3. Select from list “Microsoft OLE DB Provider for ODBC Drivers” and press “Next” button.



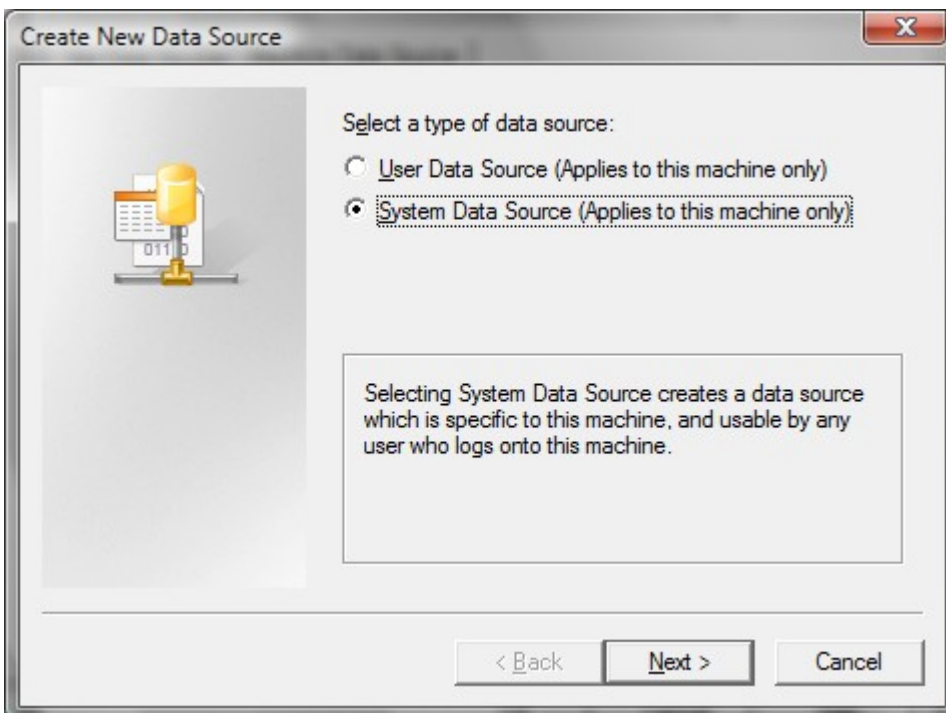
4. Check “Use connection string” and press “Build” button.



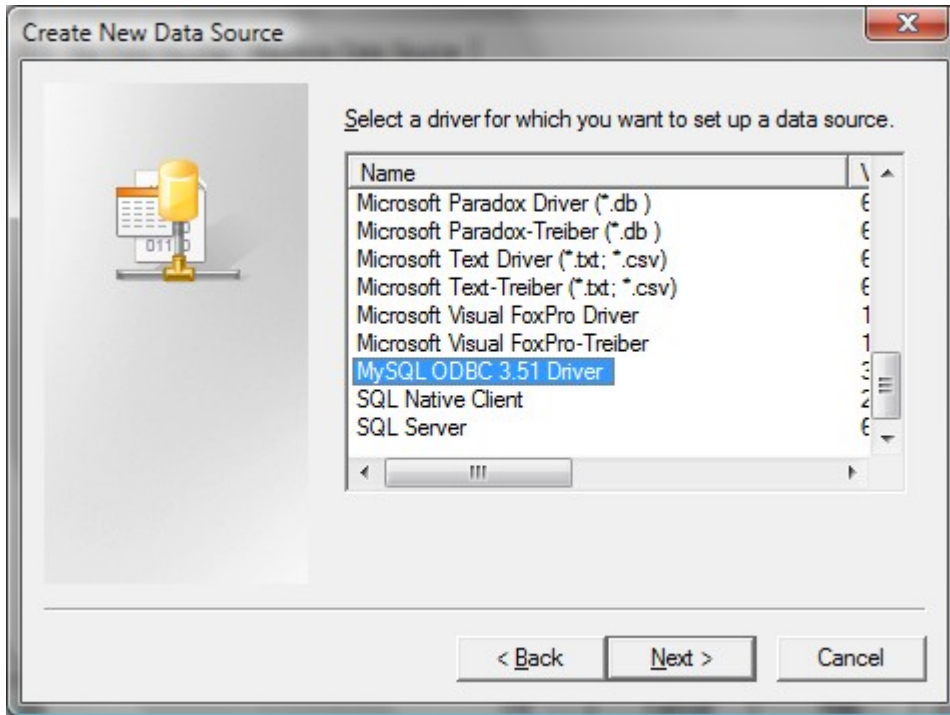
5. Press “New” button.



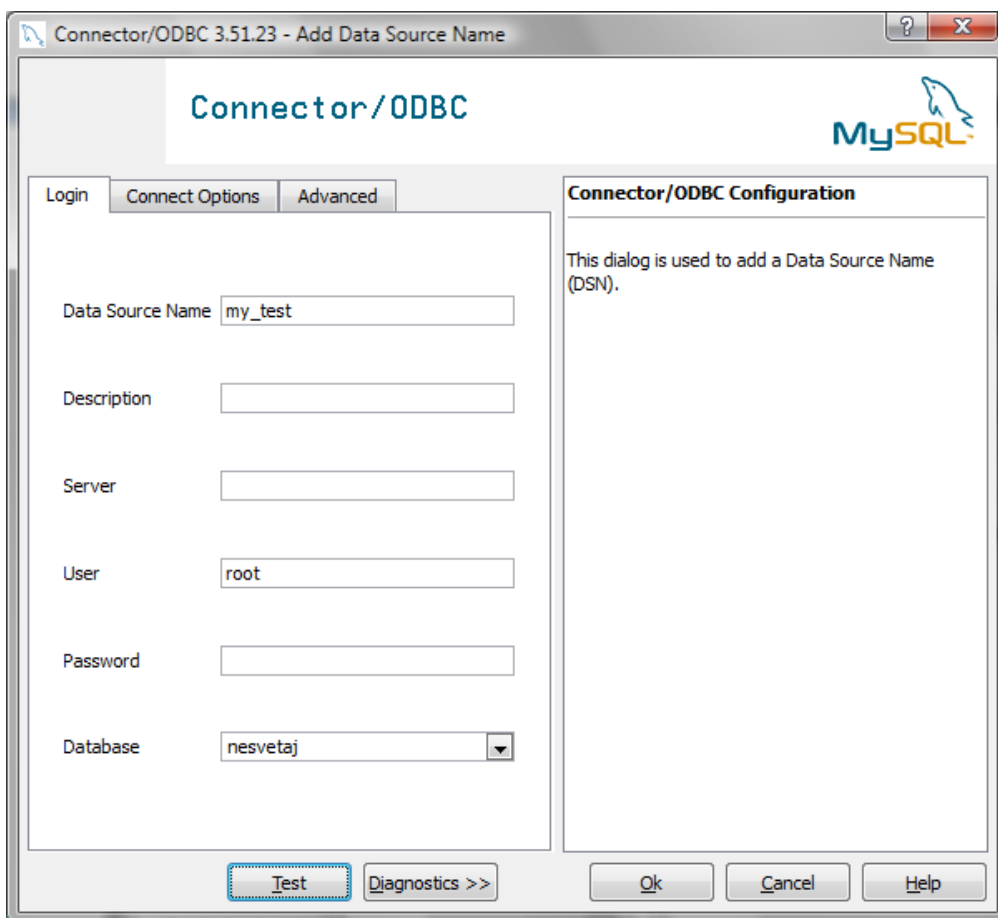
6. Select “System data source” and press “Next”.



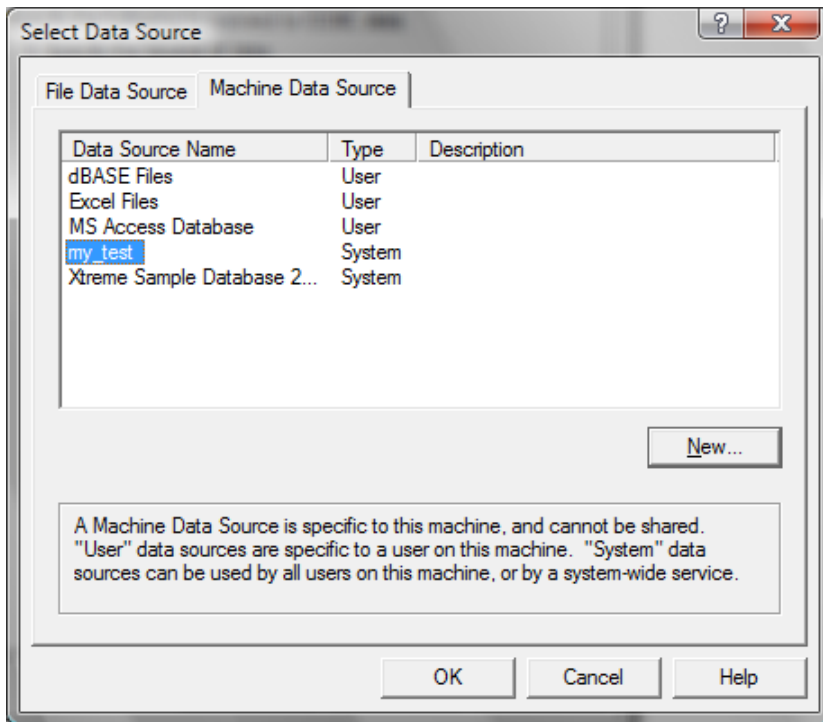
7. Select a driver from list “MySQL ODBC...”



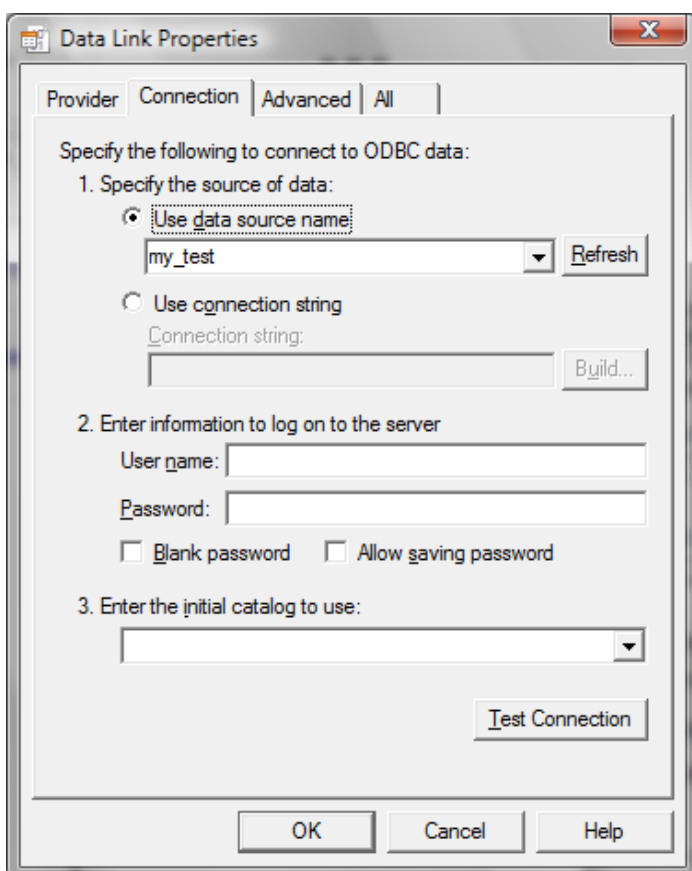
8. Fill all needed fields for connect to MySQL database. Do not remember set a data source name for feature use. You can use "Test" button for verify connection.



9. Press OK.

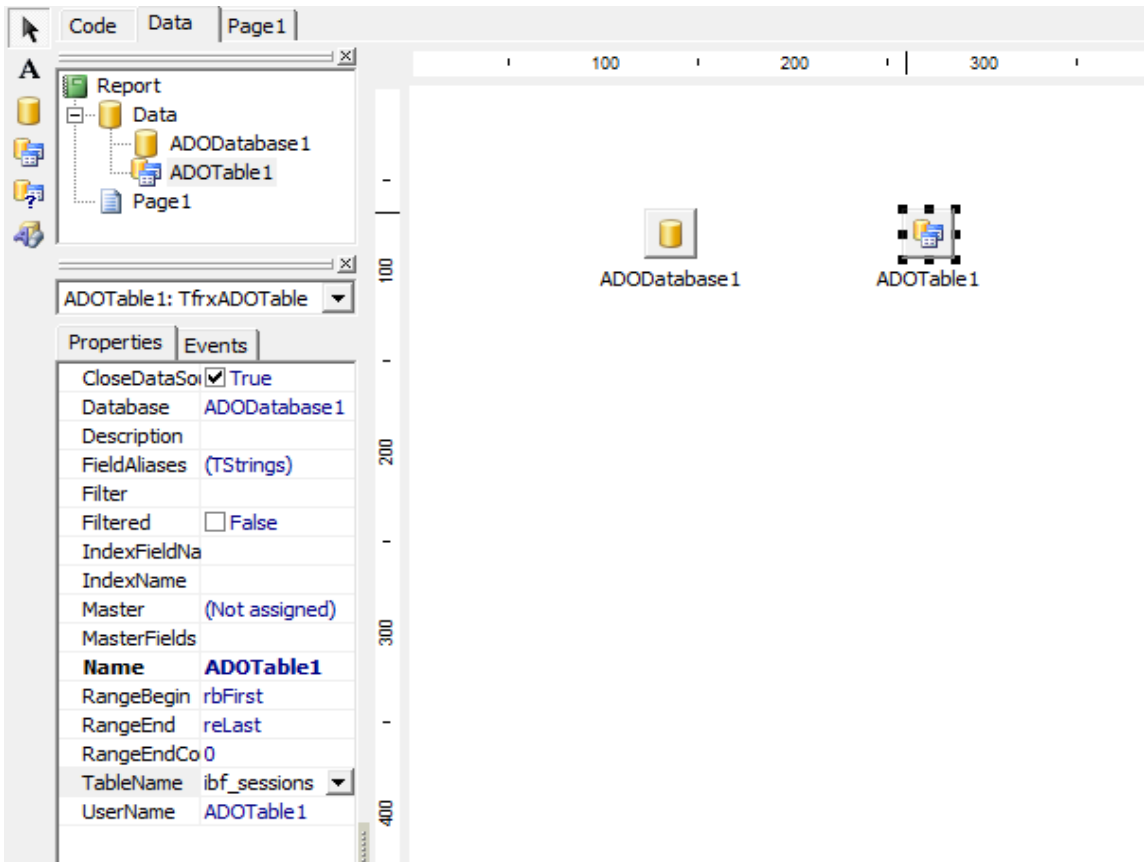


10. Press "Refresh" and select previously created data source name. Then press "Test connection" and "OK".

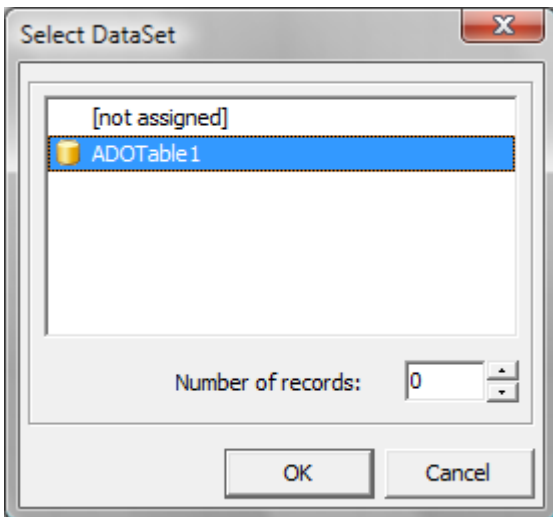


11. Click on ADODatabase1 in designer and set Connected = True in Object Inspector. You can toggle a property "Login prompt" to False if needed.

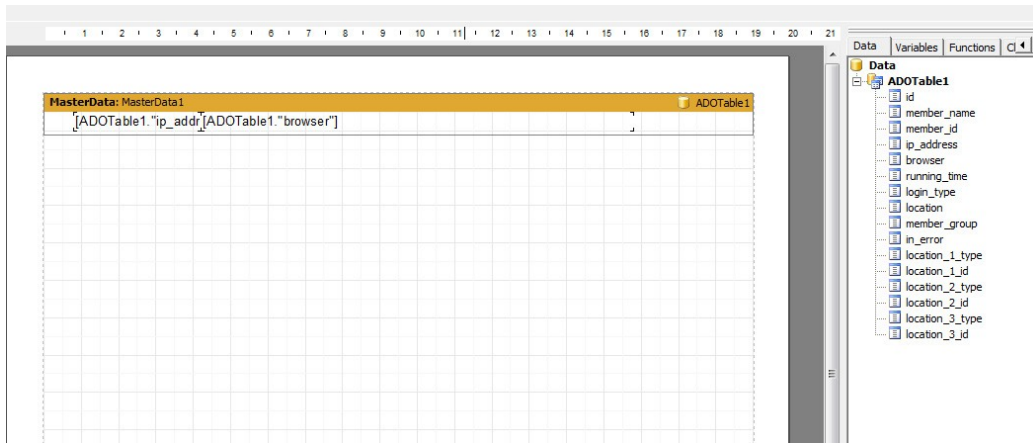
12. Place the ADOTable1 and select any table in Object Inspector (“TableName” property)



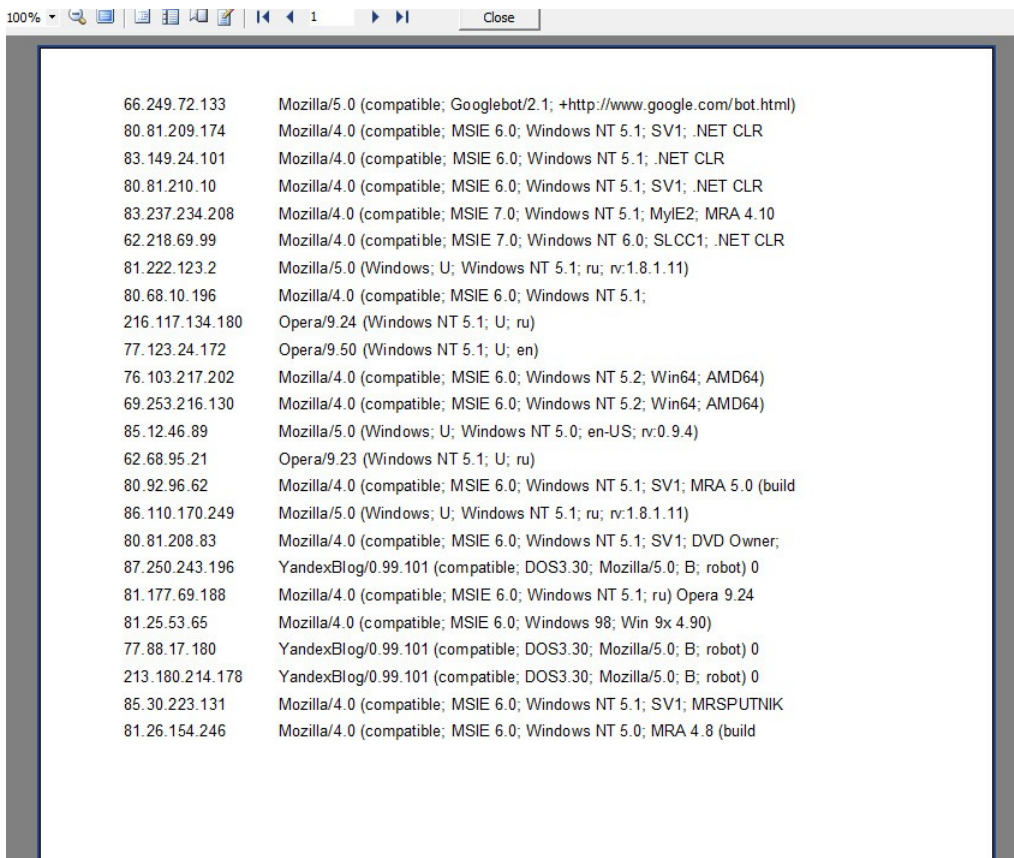
13. Go to report page, place MasterData band on the page and select Source ADOTable1.



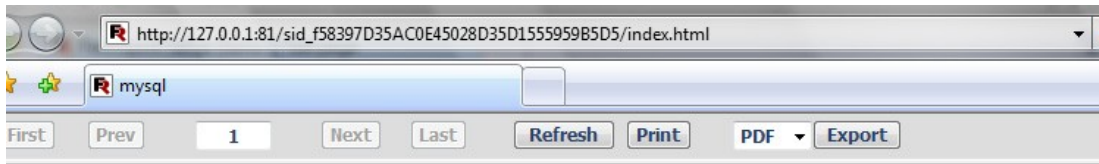
14. Drag-n-drop any fields of ADOTable1 from Data inspector in MasterData1 band.



15. Click on preview button.



16. Save report in Server\Reports folder and restart FastReport Server. Go to Server page and click on your report.



FastReport - Unregistered version (only 5 pages)

66.249.72.133	Mozilla/5.0 (compatible; Googlebot/2.1; +http://www.google.com/bot.html)
80.81.209.174	Mozilla/4.0 (compatible; MSIE 6.0; Windows NT 5.1; SV1; .NET CLR 1.1.4322)
83.149.24.101	Mozilla/4.0 (compatible; MSIE 6.0; Windows NT 5.1; .NET CLR 2.0.50727)
80.81.210.10	Mozilla/4.0 (compatible; MSIE 6.0; Windows NT 5.1; SV1; .NET CLR 1.1.4322; .NET CLR 2.0.50727; MEGAUPLOAD 1.0; .NET CLR 3.0.04506.30)
83.237.234.208	Mozilla/4.0 (compatible; MSIE 7.0; Windows NT 5.1; MyIE2; MRA 4.10 (build 01952); .NET CLR 2.0.50727; MEGAUPLOAD 2.0)
62.218.69.99	Mozilla/4.0 (compatible; MSIE 7.0; Windows NT 6.0; SLCC1; .NET CLR 2.0.50727; Media Center PC 5.0; .NET CLR 3.0.04506)
81.222.123.2	Mozilla/5.0 (Windows; U; Windows NT 5.1; ru; rv:1.8.1.11) Gecko/20071127 Firefox/2.0.0.11
80.68.10.196	Mozilla/4.0 (compatible; MSIE 6.0; Windows NT 5.1;
216.117.134.180	Opera/9.24 (Windows NT 5.1; U; ru)
77.123.24.172	Opera/9.50 (Windows NT 5.1; U; en)
76.103.217.202	Mozilla/4.0 (compatible; MSIE 6.0; Windows NT 5.2; Win64; AMD64)
69.253.216.130	Mozilla/4.0 (compatible; MSIE 6.0; Windows NT 5.2; Win64; AMD64)
85.12.46.89	Mozilla/5.0 (Windows; U; Windows NT 5.0; en-US; rv:0.9.4) Gecko/20011128 Netscape6/6.2.1
62.68.95.21	Opera/9.23 (Windows NT 5.1; U; ru)
80.92.96.62	Mozilla/4.0 (compatible; MSIE 6.0; Windows NT 5.1; SV1; MRA 5.0 (build 02053); MRSPUTNIK 2, 0, 0, 17 SW; .NET CLR 1.1.4322; MEGAUPLOAD 2.0)
86.110.170.249	Mozilla/5.0 (Windows; U; Windows NT 5.1; ru; rv:1.8.1.11) Gecko/20071127 Firefox/2.0.0.11
80.81.209.83	Mozilla/4.0 (compatible; MSIE 6.0; Windows NT 5.1; SV1; DVD Creator